

HUNTER VALLEY MTBO CHAMPIONSHIPS

Killingworth South 8th August 21

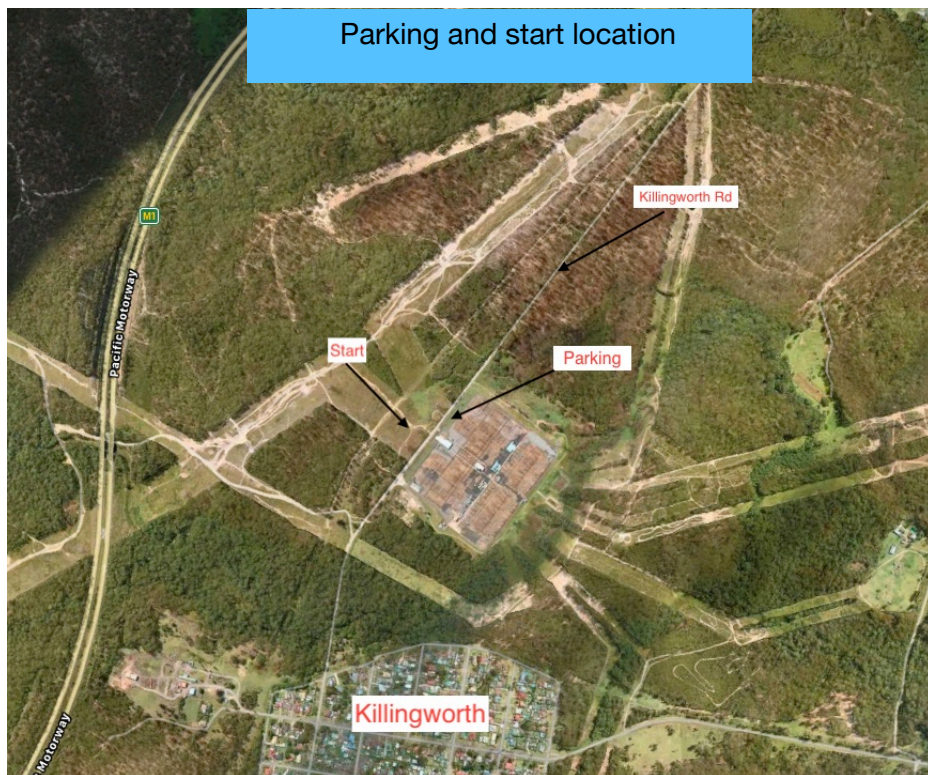
This is a 90 minute score event with a sprint course in the mix. Ideal practice for the upcoming Australian MTBO Champs at NEATH.

Heaps of fast and flowing 4x4 tracks and mtb trails located to the north and south of Killingworth. A few new tracks in the mix as well.

Ideal first event if you are new to MTBO!

Look for the **HELP** flag if it is your first event. We will set you up for 90 minutes of fun with the odd challenges thrown in.

Parking along the road between Killingworth and West Wallsend in front of the sub station.



All you need is your bike, helmet and riding gear!



Join in the fun of mountain bike riding and navigation around some great riding locations in the Newcastle region. The events cater to all levels of riding skills and help is available at each event to get you started. Groups, families welcome!

Details and location can be found on the Newcastle Orienteering website.

<http://www.newcastleorienteering.asn.au/>
BOSS Organiser Greg Bacon
gregbacon63@gmail.com

COURSES

Line Score Open men and women
 Over 55 men and women
All Score Open men and women
 Over 55 men and women
 Family
 Team
 E-mtb Men and women

Only the Line Score course will have several controls to be visited in order. Line course approx 8k in length.

Starts: Between 10.00am and 11.30am

Duration: 90minutes

Cost:

Members \$12.00, Juniors \$9.00

Casuals. \$15.00, Juniors \$10.00

First Timer. \$12.00 includes map board and Sport Ident stick hire

Map board hire: \$2.00

Sport Ident Hire: \$5.00

