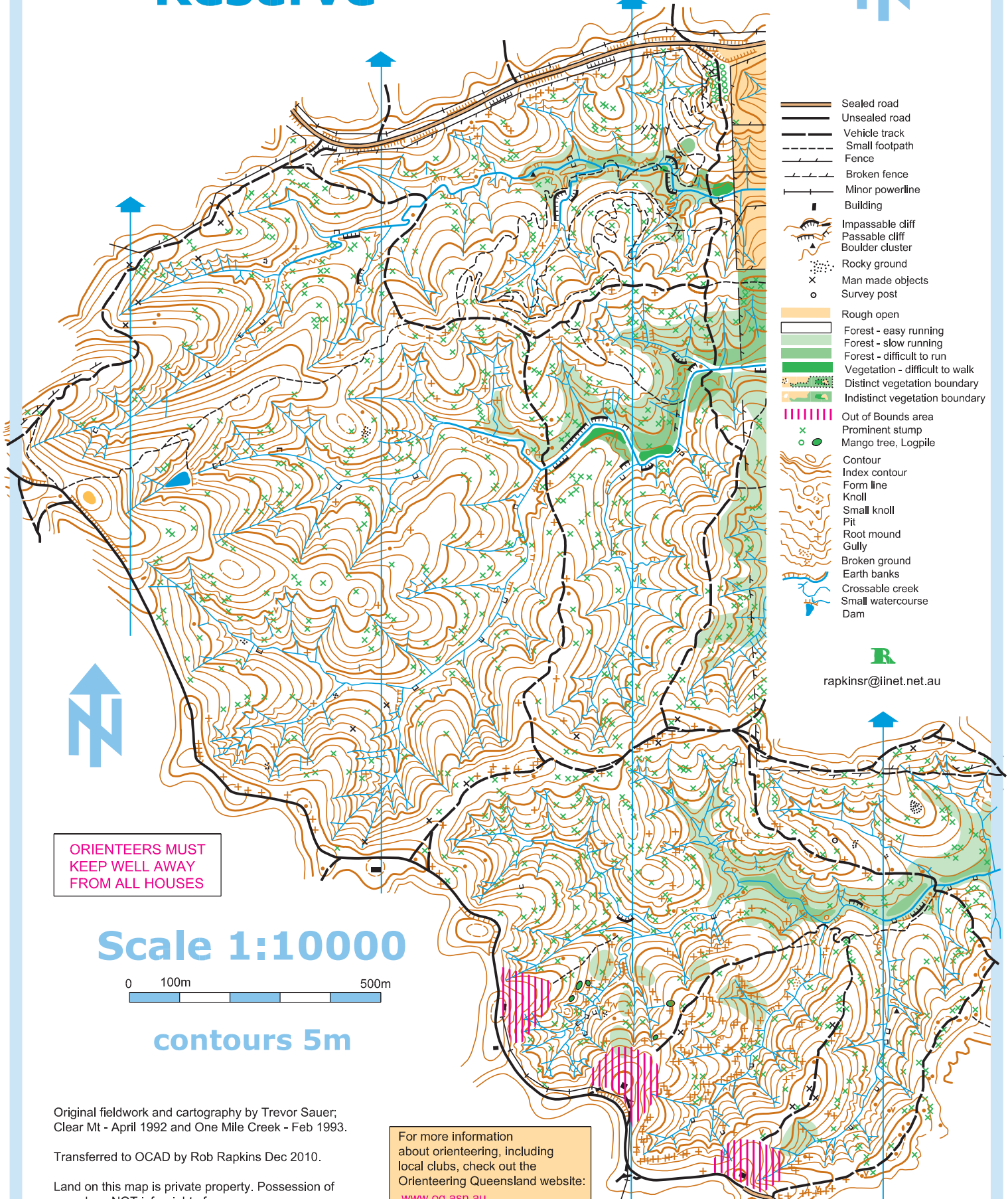


# Clear Mountain Reserve



Copyright December 2010  
Enoggeroos Orienteering Club Inc.



- Sealed road
- Unsealed road
- Vehicle track
- Small footpath
- Fence
- Broken fence
- Minor powerline
- Building
- Impassable cliff
- Passable cliff
- Boulder cluster
- Rocky ground
- Man made objects
- Survey post
- Rough open
- Forest - easy running
- Forest - slow running
- Forest - difficult to run
- Vegetation - difficult to walk
- Distinct vegetation boundary
- Indistinct vegetation boundary
- Out of Bounds area
- Prominent stump
- Mango tree, Logpile
- Contour
- Index contour
- Form line
- Knoll
- Small knoll
- Pit
- Root mound
- Gully
- Broken ground
- Earth banks
- Crossable creek
- Small watercourse
- Dam



rapkinsr@inet.net.au

**ORIENTEERS MUST  
KEEP WELL AWAY  
FROM ALL HOUSES**

**Scale 1:10000**



**contours 5m**

Original fieldwork and cartography by Trevor Sauer;  
Clear Mt - April 1992 and One Mile Creek - Feb 1993.

Transferred to OCAD by Rob Rapkins Dec 2010.

Land on this map is private property. Possession of  
map does NOT infer right of access

For more information  
about orienteering, including  
local clubs, check out the  
Orienteering Queensland website:  
[www.oq.asn.au](http://www.oq.asn.au)