



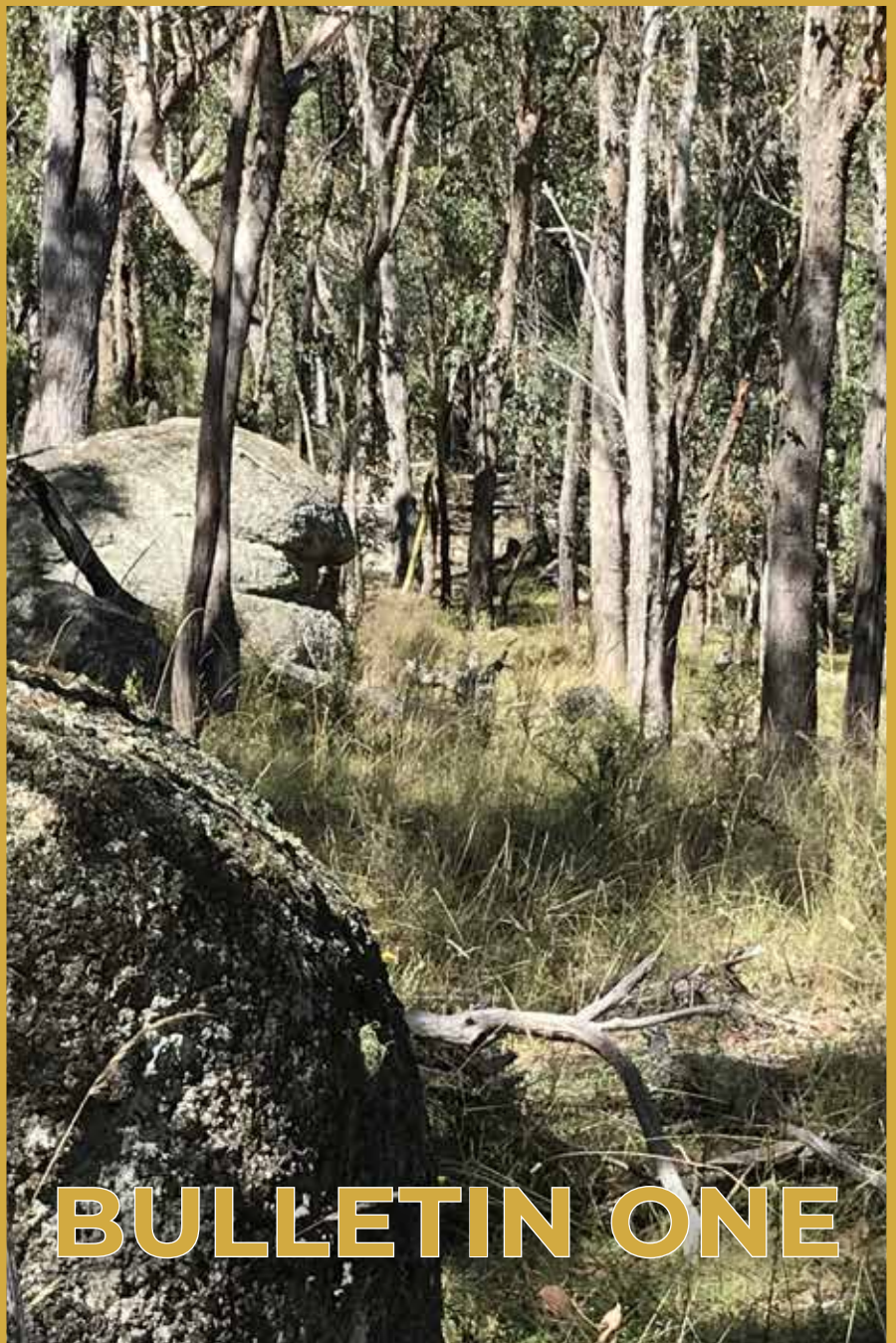
# AUSTRALIAN ORIENTEERING CHAMPIONSHIPS

ARMIDALE NSW 2024

**28 September  
to  
6 October  
2024**



Version 03  
6 August 2024



## BULLETIN ONE



# INTRODUCTION LOCATION

## INTRODUCTION

The Anaiwan and Kamilaroi people are the traditional owners of the country that encompasses current day Armidale and Uralla, and the local Indigenous population is still more than double that of the Australian average. The Anaiwan people settled the New England Ranges around Uralla and Armidale whilst the Kamilaroi headed west to the Inverell region.

Welcome to the land of The Granite Belt which runs along the Great Dividing Range crossing state borders. The Granite belt has played host to many State and National Championship events. This year is no exception as competitors will be treated to 3 Championship races on a brand new area with magical granite and fast, friendly vegetation. With the 7 events of this Championship carnival based in and around Armidale and Uralla, there is a large range of tourist activities as well as cultural activities to experience in the rest days.

## LOCATION

**ARMIDALE** is a city in the Northern Tablelands, New South Wales. Armidale had a population of 23,967 as of the 2021 census. It is the administrative centre for the Northern Tablelands region. It is approximately halfway between Sydney and Brisbane at the junction of the New England Highway and Waterfall Way.

Armidale is 485km from Sydney and 467km from Brisbane.

**URALLA** is 23km southwest of Armidale. It is located at the intersection of the New England Highway and Thunderbolts Way.

## LINKS

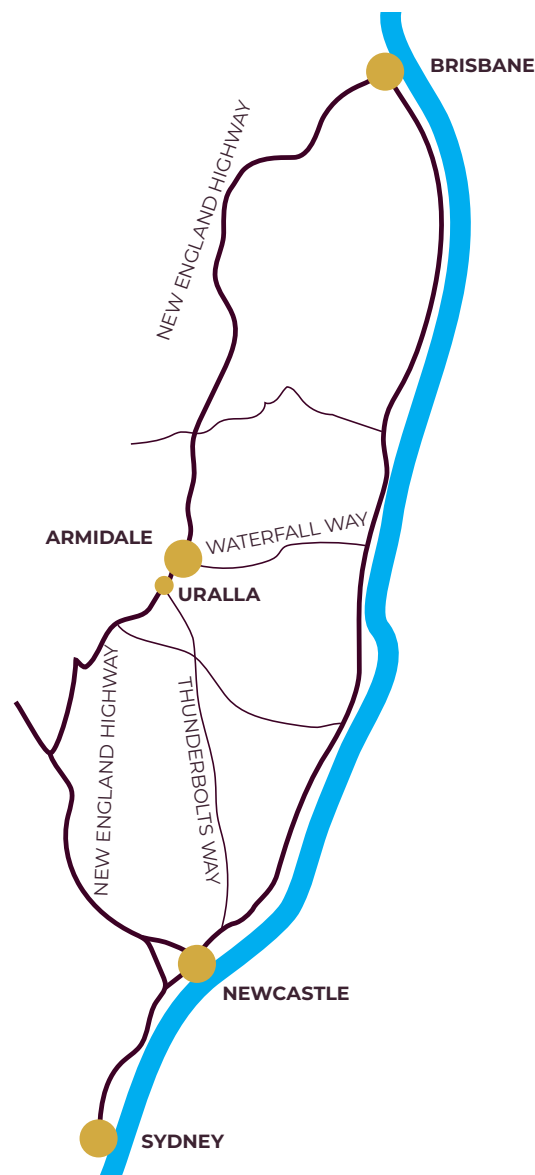
Website [aoc2024.com.au](http://aoc2024.com.au)



[Facebook](#)



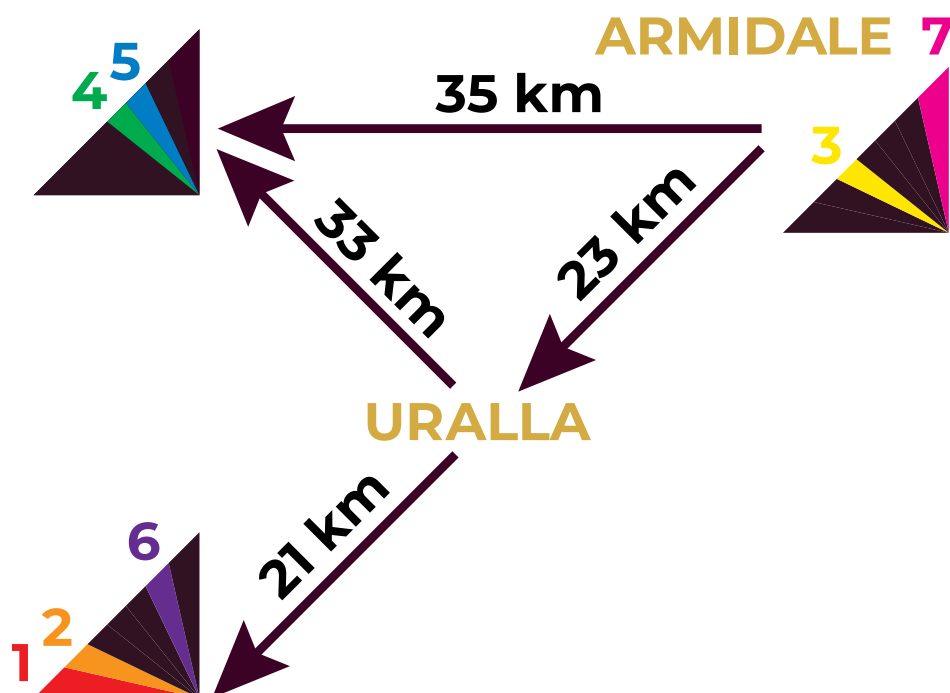
[Instagram](#)

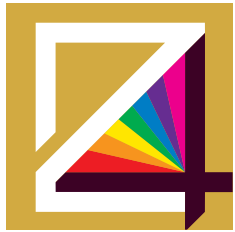




## EVENTS

DATE	EVENT	LOCATION
Saturday 28 Sept	<b>1 AUSTRALIAN MIDDLE DISTANCE CHAMPIONSHIP WRE &amp; NOL TEAM</b>	"Glenburnie"
Sunday 29 Sept	<b>2 AUSTRALIAN RELAY CHAMPIONSHIP NOL TEAM</b>	"Glenburnie"
Monday 30 Sept	Rest day	
Tuesday 1 Oct	<b>3A AUSTRALIAN SCHOOLS SPRINT CHAMPIONSHIP 3B THUNDERBOLT 3 DAYS</b>	The Armidale School
Wednesday 2 Oct	<b>4A AUSTRALIAN SCHOOLS LONG DISTANCE CHAMPIONSHIP 4B THUNDERBOLT 3 DAYS</b>	"Pine Tree"
Thursday 3 Oct	<b>5A AUSTRALIAN SCHOOLS RELAY CHAMPIONSHIP 5B THUNDERBOLT 3 DAYS</b>	"Pine Tree"
Friday 4 Oct	Rest day	
Saturday 5 Oct	<b>6 AUSTRALIAN LONG DISTANCE CHAMPIONSHIP WRE &amp; NOL TEAM</b>	"Glenburnie"
Sunday 6 Oct	<b>7 AUSTRALIAN SPRINT DISTANCE CHAMPIONSHIP WRE &amp; NOL TEAM</b>	University of New England





The AOC 2024 is being organised by the AOC 2024 Team on behalf of ONSW.

## AOC 2024 DIRECTORS

Ron Pallas  
m 0424 720 165  
email [ronpallas@hotmail.com](mailto:ronpallas@hotmail.com)

Nick Dent  
m 0428 251 786  
email [nickdent7@gmail.com](mailto:nickdent7@gmail.com)

## TECHNICAL TEAM

EVENT	PLANNER	CONTROLLER
1 AUSTRALIAN MIDDLE DISTANCE CHAMPIONSHIP - WRE & NOL TEAM	Steve Craig	Alex Davey
2 AUSTRALIAN RELAY CHAMPIONSHIP NOL TEAM	Anna Fitzgerald	Hilary Wood
3A AUSTRALIAN SCHOOLS SPRINT CHAMPIONSHIP 3B THUNDERBOLT 3 DAYS	Oskar Mella	Nick Dent
4A AUSTRALIAN SCHOOLS LONG DISTANCE CHAMPIONSHIP 4B THUNDERBOLT 3 DAYS	Alvin Craig	Mark Shingler
5A AUSTRALIAN SCHOOLS RELAY CHAMPIONSHIP 5B THUNDERBOLT 3 DAYS	Rebecca George	Mark Shingler
6 AUSTRALIAN LONG DISTANCE CHAMPIONSHIP - WRE & NOL TEAM	Rob Vincent	Paul Prudhoe
7 AUSTRALIAN SPRINT DISTANCE CHAMPIONSHIP - WRE & NOL TEAM	Serena Doyle	Nick Dent





## ENTRY PROCEDURE

Entries for all events are to be made via Eventor.

Hint: From the calendar tick all events that you wish to enter, then click “enter selected events.”

You will then be able to enter all events in one go.

### Special Notes for specific events:

#### Australian Relay Entry

Competitors wishing to compete in the Australian Relays must enter through:

[2A- Australian Relay Championship - Individual Entries](#)

State and Overseas Team selectors will then upload their selected team:

[2B Australian Relay Championship- State & Team Selectors only](#)

#### Australian Schools Orienteering Championship (ASOC)

All entries in ASOC will be entered by team managers only.

#### Independent Student Entry into ASOC Events

Independent students must enter themselves using the events labelled:

“Australian Schools ----- Championships - ENTRY BY INDEPENDENT STUDENTS”

#### Thunderbolts Three Day (T3D)

This is a multi-day event.

For details of how to enter one or 2 days only or run different classes on different days, please read the [“How to”](#) document.

There will be no allocated start times for T3D

### Split Start times- Australian Middle, Long and Sprint Distances

Competitors requiring split times for child minding need email [ronpallas@hotmail.com](mailto:ronpallas@hotmail.com) detailing each person involved with their entry class and if there is a preference as to whom starts early/late.

## ENTRY FEES

	Middle	Relays	Long	Sprint	T3D	Schools
Senior	\$55	\$50	\$60	\$50	\$35	
Junior	\$39	\$35	\$42	\$35	\$25	\$25
Sub-Junior	\$28	\$25	\$30	\$25	\$17.50	

OA and ONSW have both significantly increased the event levies that apply to events at this carnival in 2024. Some examples of these increases are:

#### OA levies

- Aus Middle increased by 160% - \$4:00 to \$10:45

- Aus Relay and Sprint increased by 30%

- ASOC events increased by 68%

#### NSW levies

- Aus Long and Middle and Relay increased by 16%

**Closing date Sunday 1st September**



# SI CARD HIRE, EMBARGOES MERCHANDISE

## SI CARD HIRE

(normal, not SIAC): Is available by entering the separate event: [SI Card Hire AOC24](#). There are 4 classes from which to choose:

- All Events- \$10
- Middle/Relay events Only - \$6
- Mid- Week Events only - \$6
- Long / Sprint events Only - \$6

## EMBARGOES

The following areas are embargoed until the day of each Carnival event between 28th September and 6th October 2024. Permission for access by orienteers for any reason, including non-orienteering reasons, must be obtained from the Carnival Technical Director.

1. **Pine Tree Orienteering Map.** All of the existing Pine Tree orienteering map (1993 and subsequent updates) and access to the Pine Tree property.
2. **University of New England- Armidale.** Access to the University of New England Armidale IS permitted for non-orienteering reasons for those with an education- or business-related purpose (contact the Carnival Technical Director first). Use of orienteering maps and/or school plans, training of all kinds, and route choice testing IS NOT allowed.
3. **The Armidale School (TAS).** Access to The Armidale School IS permitted for non-orienteering reasons for those with an education- or business-related purpose (contact the Carnival Technical Director first). Use of orienteering maps and/or school plans, training of all kinds, and route choice testing IS NOT allowed.

Nick Dent

## MERCHANDISE

2024 Australian Orienteering Championships Carnival Clothing

Polo shirts in Women's and Men's sizes and a range of colours as well as a navy one size fits all running cap will be available for purchase through [Eventor](#).





# EVENT 1 COURSE DETAILS

## 1. AUSTRALIAN MIDDLE DISTANCE CHAMPIONSHIP WRE & NOL TEAM

Course	Classes	Difficulty	Winning Time	Approx Distance
1	M21E	Hard	30-35	5.9
2	M20E	Hard	30-35	5.5
3	W21E	Hard	30-35	4.8
4	W20E	Hard	30-35	4.2
5	M35A, M40A, M18A	Hard	25-35	4.5
6	M45A, M16A	Hard	25-35	4.1
7	M50A, M21A, M21Sport	Hard	25-35	3.9
8	M55A, W35A, W40A	Hard	25-35	3.7
9	M60A, W18A, W45A	Hard	25-35	3.5
10	M65A, W16A, W21A, W21Sport, M20Sport	Hard	25-35	3.1
11	M70A, W50A, W55A	Hard	25-35	3.0
12	M75A, W60A, M21AS, W20Sport	Hard	25-35	2.6
13	W65A, W70A, W21AS, M35-54AS	Hard	25-35	2.3
14	M80A, W75A, W35-54AS, M55+AS	Hard	25-35	1.9
15	M85A, W80A, W55+AS	Hard	25-35	1.3
16	M90A, W85A, W90A	Hard	25-35	0.8
17	M14A, M Open B, M Junior B	Moderate	25-35	3.0
18	W14A, W Open B, W Junior B	Moderate	25-35	2.5
19	M12A, W12A, Open Easy	Easy		2.5
20	M10A, W10A, M/W10N, Open V Easy	Very easy		2.0

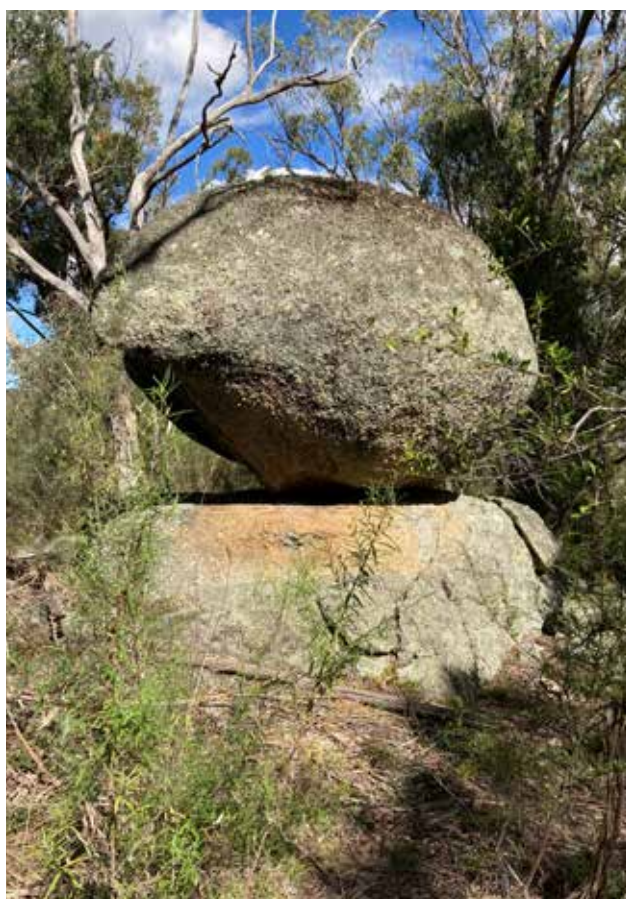




# EVENT 2 COURSE DETAILS

## 2. AUSTRALIAN RELAY CHAMPIONSHIP NOL TEAM

Course	Classes	Difficulty	Winning Time per leg	Approx Distance
1	M21E	Hard	35	6.2
2	M20E, M35A	Hard	35	5.6
3	M45A, W21E	Hard	35	4.8
4	W20E, M16A, W35A	Hard	35	4.5
5	M55A, W45A, M/W35-54AS	Hard	30	3.8
6	M65A, W16A, W55A, M21AS	Hard	30	3.3
7	M75A, W65A, M55AS, W21AS	Hard	30	2.7
8	W75A, W55AS	Hard	30	2.2
9	M14A, M Open B, Mixed Mod	Moderate	25	3.5
10	W14A, W Open B	Moderate	25	3.4
11	M/W12, Mixed Easy	Easy	15	2.5
	Mixed Age- Hard 5, Mod 9, Easy 11			3.8/3.5/2.5







# EVENTS 3A/3B COURSE DETAILS

## 3A AUSTRALIAN SCHOOLS SPRINT CHAMPIONSHIP

Course	Classes	Difficulty	Winning Time	Approx Distance
1	M19 (Senior Boys)	Hard	12-15	3.0
2	W19 (Senior Girls)	Hard	12-15	2.7
5	M15 (Junior Boys)	Moderate	12-15	2.8
6	W15 (Junior Girls)	Moderate	12-15	2.5

## 3B THUNDERBOLTS 3 DAY - DAY 1

Course	Classes	Difficulty	Winning Time	Approx Distance
1	Men A, Women A	Hard	12-15	3.0
2	Men B, Women B	Hard	12-15	2.7
3	Men C, Women C	Hard	12-15	2.4
4	Men D, Women D	Hard	12-15	2.0
5	Men E, Women E	Moderate	12-15	2.8
7	Men F, Women F	Easy	12-15	1.8
8	Men G, Women G	Very Easy	12-15	1.6





# EVENTS 4A/4B COURSE DETAILS

## 4A AUSTRALIAN SCHOOLS LONG DISTANCE CHAMPIONSHIP

Course	Classes	Difficulty	Winning Time	Approx Distance
1	M19 (Senior Boys)	Hard	45-50	5.5
2	W19 (Senior Girls)	Hard	45-50	4.0
5	M15 (Junior Boys)	Moderate	35-40	3.7
6	W15 (Junior Girls)	Moderate	35-40	3.3

## 4B THUNDERBOLTS 3 DAY - DAY 2

Course	Classes	Difficulty	Winning Time	Approx Distance
1	Men A, Women A	Hard	45-50	5.5
2	Men B, Women B	Hard	45-50	4.0
3	Men C, Women C	Hard	35-40	3.3
4	Men D, Women D	Hard	35-40	2.5
5	Men E, Women E	Moderate	35-40	3.7
7	Men F, Women F	Easy	30-35	2.4
8	Men G, Women G	Very Easy	20-25	1.9





# EVENTS 5A/5B COURSE DETAILS

## 5A AUSTRALIAN SCHOOLS RELAY CHAMPIONSHIP

Course	Classes	Difficulty	Winning Time	Approx Distance
1	M19 (Senior Boys)	Hard	35	4.0
2	W19 (Senior Girls)	Hard	35	3.1
5	M15 (Junior Boys)	Moderate	30	3.0
6	W15 (Junior Girls)	Moderate	30	2.5

## 5B THUNDERBOLTS 3 DAY - DAY 3

Course	Classes	Difficulty	Winning Time	Approx Distance
1	Men A, Women A	Hard	35	4.0
2	Men B, Women B	Hard	35	3.1
3	Men C, Women C	Hard	35	2.5
4	Men D, Women D	Hard	35	2.0
5	Men E, Women E	Moderate	30	3.0
7	Men F, Women F	Easy	25	2.4
8	Men G, Women G	Very Easy	20	1.9





# EVENT 6 COURSE DETAILS

## 6. AUSTRALIAN LONG DISTANCE CHAMPIONSHIP WRE & NOL TEAM

Course	Classes	Difficulty	Winning Time	Approx Distance
1	M21E	Hard	90	13.6
2	M20E	Hard	75-80	11.1
3	W21E	Hard	90	11.2
4	W20E	Hard	75-80	8.3
5	M35A, M40A, M21A, M21Sport	Hard	65-70	9.3
6	M45A, W35A, M18A, M20A, M20Sport	Hard	60-70	7.9
7	M50A, W40A, W21A, W21Sport	Hard	55-65	6.9
8	M16A	Hard	50-60	6.2
9	M55A, W45A, M21AS, W20A, W18A, W20Sport	Hard	50-60	5.9
10	M60A, W50A, M20AS	Hard	50-55	5.2
11	M65A, W21AS, W55A	Hard	50	4.9
12	M70A, M35AS, W60A, W16A	Hard	50	4.5
13	M75A, W20AS, W35AS, M45AS	Hard	50	3.8
14	W65A, W70A	Hard	50	3.6
15	W45AS, M55AS	Hard	40-50	3.4
16	M80A, W75A, W55AS, M65AS	Hard	40-50	2.8
17	M85A, W80A, W65AS	Hard	40-50	2.4
18	M90A, W85A, W90A	Hard	40-50	1.1
19	M14A, M Open B	Moderate	35	4.0
20	W14A, W Open B	Moderate	35	3.6
21	M12A, W12A, Open Easy	Easy	25	2.5
22	M10A, W10A, M/W10N,	Very easy	25	2.2





# EVENT 7 COURSE DETAILS

## WRE

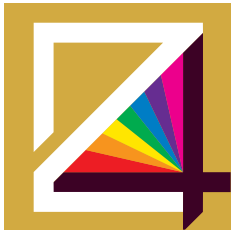
### 7. AUSTRALIAN SPRINT DISTANCE CHAMPIONSHIP WRE & NOL TEAM

Course	Classes	Difficulty	Winning Time	Approx Distance
1	M21E, M20E, M18A	Hard	12-15	3.5
2	W21E, W20E, W18A	Hard	12-15	3.0
3	M35A, M40A, M45A, M16A	Hard	12-15	3.0
4	M50A, W35A	Hard	12-15	2.9
5	M55A, W40A, W16A, M21A	Hard	12-15	2.7
6	M60A, M65A, W45A	Hard	12-15	2.5
7	M70A, W50A, W55A, W21A	Hard	12-15	2.3
8	M75A, W60A, W65A	Hard	12-15	2.1
9	M80A, W70A, W75A	Hard	12-15	1.9
10	M85A, W80A	Hard	12-15	1.6
11	M90A, W85A, W90A	Hard	12-15	1.4
12	M14A, M Open B	Moderate	12-15	2.2
13	W14A, W Open B	Moderate	12-15	2.0
14	M12A, W12A, Open Easy	Easy	12-15	2.0
15	M10A, W10A, M/W10N	Very Easy	12-15	1.8

## WRE

The Australian Long, Middle and Sprint Championships will be World Ranking Events. Results from 20E and 21E classes will be combined for the Australian Sprint Championship. Entrants who wish to be included in the WRE results must have registered as an athlete in IOF Eventor and obtained an IOF ID number.





## ARMIDALE SHOWGROUND CAMPING

Armidale Showground offers large sites, powered and un-powered for campers and caravans. There is a camp kitchen and large clean amenities block with laundry facilities. Well located minutes away from Armidale's city centre and within easy reach of shopping, restaurants, and entertainment opportunities.

The Showground camping area is spacious and uncluttered. When booking- mention you are from Orienteering.



For motel, hotel, caravan park and other types of accommodation see the following websites

### Armidale

<http://www.visitarmidale.com.au>



### Uralla

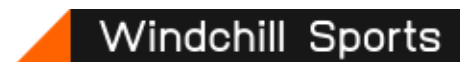
<http://www.uralla.com>





# SUPPORTERS and SPONSORS

## AOC 2024 SUPPORTERS



## AOC 2024 EVENT SUPPORTERS



## VERSION

V01 - 8 March 2024 - Published

V02 - 11 March 2024 - Event 6 course table - W21A & W75A edited.

V03 - 6 August 2024 - Events 1 & 6 - M21Sport, W21Sport, M20Sport, W20Sport classes added.