

2024 QLD MTBO Championships



24th and 25th August, Sunshine Coast, QLD.
National MTBO Series. QLD State Series Round 7, 8 and 9.

Championship Organiser: Mark Petrie Phone 0429 899 928

BULLETIN 1.

EVENT LOCATION:

Beerburrum, Coolum and Tewantin on the Sunshine Coast.

EVENTS:

Sprint Distance, Middle Distance and Long Distance.

Saturday August 24th

MIDDLE DISTANCE: Morning.

Event Area: Beerburrum State Forest.

Start Times: From 9:00 am

Terrain: Undulating fire trails and some single track through exotic pine forest plantations.

Courses: 5 line courses. 1 x 90 min Score Course.

Getting there: 45 mins from Brisbane Airport. 35 mins drive from Sunshine Coast Airport. 45 mins drive to Sprint in Coolum.

SPRINT DISTANCE: Afternoon

Event Area: Coolum State High School and surrounds.

Start Times: From 2:00pm

Terrain: Urban

Courses: 5 line courses.

Getting there: 1 hour 20mins from Brisbane Airport. 20 mins drive from Sunshine Coast Airport. 45 mins drive from Middle Distance at Beerburrum.

Sunday August 25th

LONG DISTANCE:

Event Area: Ringtail State Forest. Tewantin.

Start Times: 8:30am

Terrain: The State Forest is undulating to hilly with forest tracks and trails through pine plantations. This forest is in a transition phase to become a National Park.

Courses: 5 line courses. 2 score courses.

Getting there: 1 hour 40mins drive from Brisbane Airport. 45 mins drive from Sunshine Coast Airport. 30min drive from the Sprint Venue.

EVENT LOCATIONS



CHAMPIONSHIP CLASSES:

Championship line courses for Long, Middle and Sprint Events will be offered in the following age classes:

**M14, M16, M20, M21, M40, M50, M60, M70, M80
W14, W16, W20, W21, W40, W50, W60, W70, WOL.**

NON-CHAMPIONSHIP CLASSES:

You can ride these solo or with friends. Some E-bike categories will be offered.

SPRINT:

There will be two non-championship classes offered. Both are line courses where you must find controls in order.

1. Recreational Line Course 1.
2. E-bike Line Course 1.

MIDDLE:

There will be 4 non-championship classes offered for conventional bikes and 2 for E-Bikes.

1. Long. Line Course 1
2. Medium. Line Course 3
3. Short. Line Course 5
4. Score course 90 minute. You find as many controls as you wish in any order in 90mins.
1. E-Bike Line. Course 1.
2. E-Bike Score. 90 minute. You find as many controls as you wish in any order in 90mins

LONG:

There will be 5 non-championship classes offered for conventional bikes and 2 for E-Bikes

1. Long. Line Course 1.
2. Medium. Line Course 3.
3. Short. Line Course 5.
4. Score course 90 min. You find as many controls as you wish in any order in 90mins
5. Score course 3 hour. You find as many controls as you wish in any order in 3 hours
1. E-Bike Line. Course 1.
2. E-Bike Score. 3 hour. You find as many controls as you wish in any order in 90mins

PRICES: EARLY BIRD PRICES to midnight Friday 16th August. We have held 2022 prices despite additional fees levied by Orienteering Australia and Queensland.

A late entry surcharge of 50% will apply after 16th August until entries close at midnight on Wednesday 21st August.

Event	Senior	Junior	Recreational Course
	Member/Non-member	Member/Non-member	Member/Non-member/Junior
Sprint Champs	\$25/ \$40	\$10	\$25/\$40 /\$10*
Middle Champs	\$30 / \$50	\$10	\$30/ \$50 / \$10*
Long Champs	\$30 / \$50	\$10	\$30 / \$50 / \$10*

***Juniors 14 years or under (at 31st Dec 2024) are free if they are riding in the Recreational courses with an adult.**

Family discounts apply for 4 or more members is enabled in Eventor.

Senior and Junior member fee is for Orienteering Australia or affiliated club members (eg Overseas orienteering club).

Non- Member competitors are eligible to ride in any class, however, they are not eligible to win a Championship event as they must be an OA or affiliated member (eg Overseas orienteering club).

EVENTOR

Entries Open 1st July 2024. Late entry fee applicable after 16th August 2024.

Entries Close midnight 21st August 2024.

Entries may be accepted after this date at the discretion of the organiser

Entries will be through Eventor: [Sprint](#) [Middle](#) [Long](#) . You do not need to be an Orienteering club member to enter, but you need to register an Eventor login. There is a help document on Eventor.

You can pay all fees in a single transaction, including other people who you enter. Within the Events Calendar, tick the boxes for all events that you wish to compete in, add all Services (Mapboards, SI sticks), and enter anyone else you need to. This will produce a single invoice for payment.

TECHNICAL INFORMATION

Australian MTBO Competition rules will apply to all events: All maps will conform to current IOF specifications with some changes to forest plantation colours. Maps will be printed on semi- waterproof paper. During all events it is only permitted to ride on marked tracks or paved areas, open or rough open land (100% or 50% yellow).

Competitors riding in the recreational class may ride in teams as these are not Championship courses.

MTBO Rules: [Rules for Mountain Bike Orienteering](#)

Expected winning times.

	LONG		MIDDLE		SPRINT
	Men	Women	Men	Women	All
Elite	105-115	85-95	55-60	45-50	20-25
Masters	105-115	85-95	55-60	45-50	20-25
Juniors	84-92	68-76	44-48	36-40	16-20

Details of the course lengths, climb and the number of controls will be available in a later bulletin.

EMBARGOED AREAS:

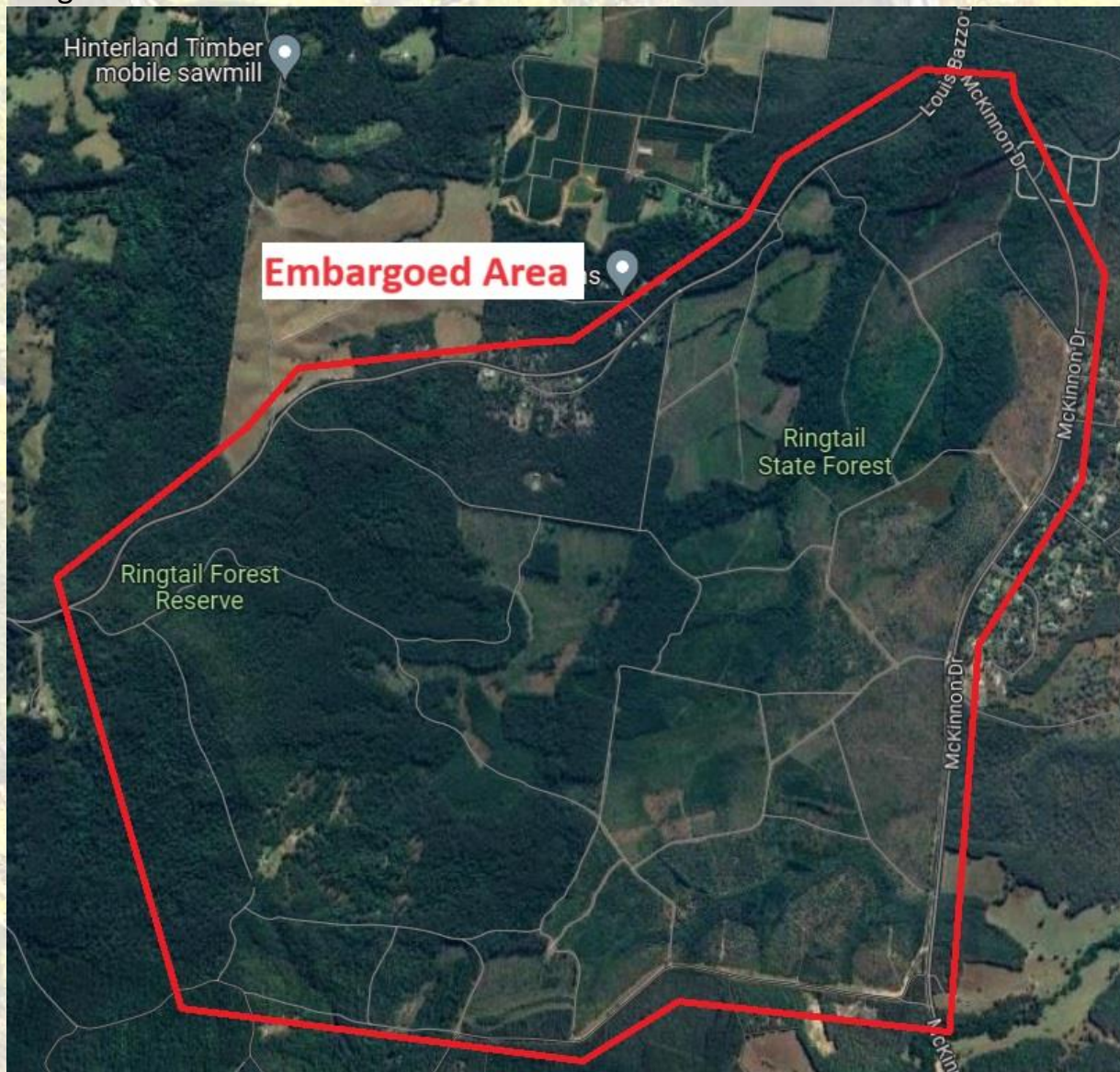
Sprint Event



Middle Distance Event



Long Distance Event



FOOD:

A sausage sizzle and drinks will be offered after the long event on Sunday morning. We also have plans for a Coffee van on both days and a social dinner Saturday night.

NEARBY THINGS TO DO

[Glasshouse Mountains Lookout](#)

[Parklands](#) 60kms off road MTB trails. Proposed Olympic 2032 precinct.

[Ferny Forest](#) 10 km single track plus Ewen Maddock ride. Total 23km.

[Bunyaville](#) Lots of fun single track

[Sugarbag Road bike park - Caloundra](#) More technical single track with features

[Wooroi MTB Park](#) Perhaps the best off road trails on the Sunshine Coast

[Brisbanes most scenic bike routes](#)

[Australia Zoo](#)

[Abbey Museum of Art and Archeology,](#)

Caboolture Markets Sun morn,

[Caboolture Airport Warplane Museum](#)

Climb [Mt Ngungun](#) (1hr return, very easy with spectacular views) or [Mt Beerwah](#) (difficult with some exposure, but great views)

Visit the beautiful beaches from Caloundra to Noosa.



**QLD
MTBO
CHAMPS**

**AUGUST
24TH AND
25TH 2024**

**BEERBURRUM,
COOLUM,
TEWANTIN.**



ENTRY LINKS

[Beerburrum - Middle Distance Event](#)

[Coolum - Sprint Distance Event](#)

[Tewantin - Long Distance Event](#)