

2024 ACT SCHOOLS ORIENTEERING CHAMPS

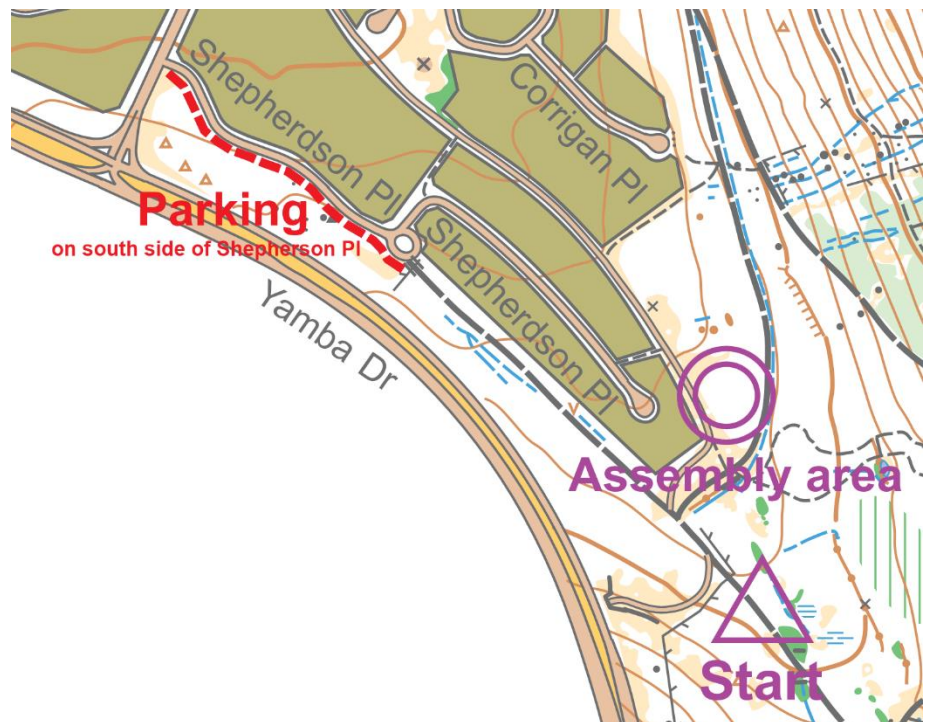


14 September

Bulletin for ACT Schools Champs and Public Event 14 September 2024 Issacs Ridge

Assembly Area

Issacs Nature Reserve
Off Shepherdson Place



Parking

Limited parking is available on the south side of Shepherdson Street, Isaacs. Please be mindful and respectful of the local residents and park only on one side of the street.

Follow tapes to the assembly area.

Map

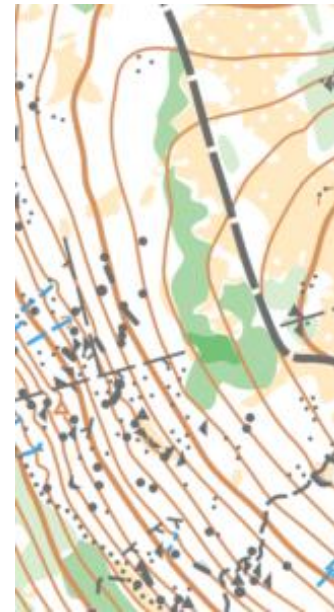
Issacs Ridge
Scale 1:7500
Contour interval 5.0m

Terrain

The terrain is predominantly mature pine forest on a steep slope with large granite boulders. As well as fire trails there are lots of mountain bike single tracks in the terrain. These are shown on the map in the area of the very easy and easy courses. It is also possible that there are some new tracks not on the map in areas covered by the moderate and hard courses.

There are lots of changes in vegetation including blackberry thickets and a mix of pine and eucalypt forest as well as a few areas where the pines trees have recently been felled, these are shown on the map. The easy course (M11, W11, M12, W12) includes a small section through very quiet streets and care should be taken to give way to any cars when crossing a road.

Loose control descriptions will be available at the start. SI air will be used. Controls will be either hanging from trees or on stands. There are lots of controls close together, so check control codes carefully.



Courses

SCHOOL	CLASSES	COURSE LENGTH KM	DIFFICULTY
Secondary	W18, M18 (born 2007 or older)	4.2	Hard
Secondary	W16, M16 (born 2008, 2009)	3.0	Hard
Secondary	W14, M14 (born 2010, 2011, 2012)	3.0	Moderate
Primary	W12, M12 (born 2012)	2.3	Easy
Primary	W11, M11 (born 2013)	2.3	Easy
Primary	W10, M10 (born 2014)	2.2	Very Easy
Primary	W9, M9 (born 2015 or 2016)	2.2	Very Easy

Presentation

Medallions will be presented to the top three place getters in each class. A perpetual trophy will be awarded to to the champion primary school based on a points system.

Catering

Blue Lightning Cake stall will be providing catering including hot and cold drinks, cakes, soup and bread rolls. All proceeds go towards supporting our ACT schools team.

Toilets

There are no toilets available at the assembly area.
Closest public toilets are located at 21 Longerenong St, Farrer.

Walk to start

The start is approximately 200m from the assembly area along a taped route.

Start

Start times will be allocated for the ACT Schools Champs and published on eventor, and will be between 10:00-10:30am. There will be a manual punch start.

ACT Schools: 10:00am - 10:30am - **pre-allocated start times** [Available Here](#)
Public Race: 10:30am - 11:30am - queued start.

Course closure

12:30pm. Controls will be collected after this time.

SPORTident AIR+

SIAC contactless punching will be enabled on all controls, except the Start and Finish.