



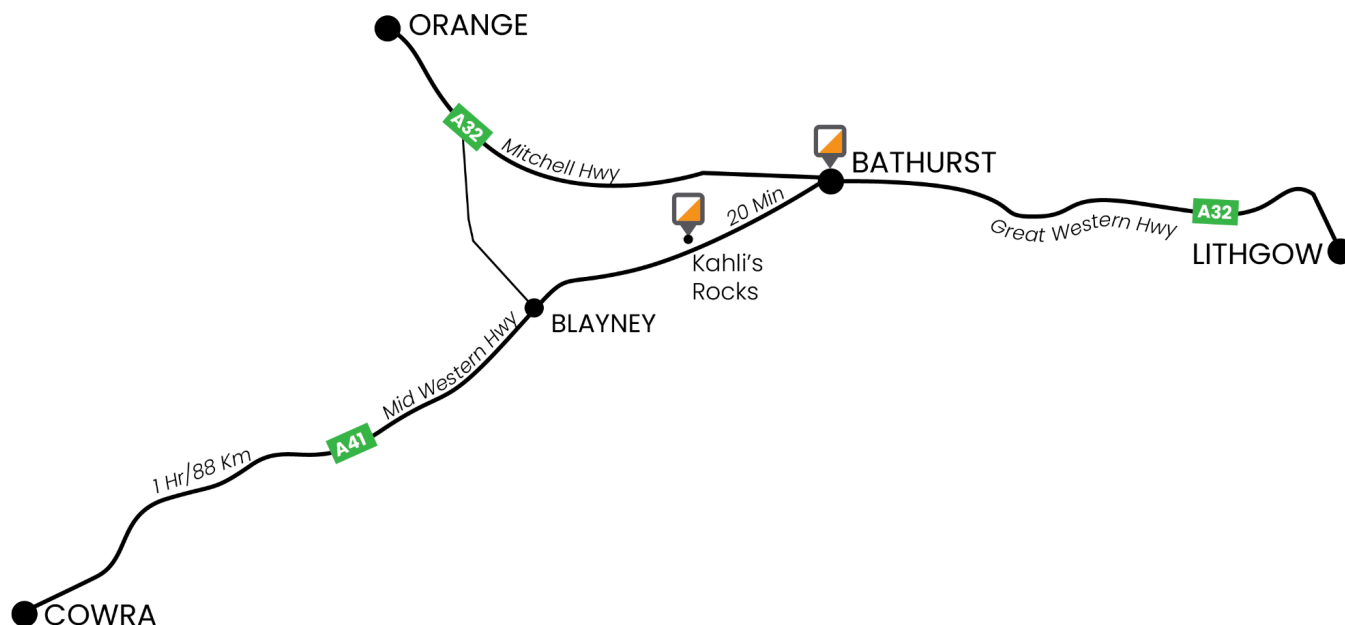
BULLETIN 1

KING'S BIRTHDAY 7-9 JUNE 2025



Location:

Central West NSW - Bathurst region



Event:

KBIII involves 3 separate orienteering events run on consecutive days on the King's Birthday weekend. Each event is a NSW State League event. Overall results for KBIII will be determined on cumulative time across the three events. More information on the individual days are available on subsequent pages.

Entry Fees:

	Day 1	Day 2	Day 3
Senior	\$30	\$30	\$30
Junior (<21y)	\$20	\$20	\$20
Sub-junior (<13y)	\$15	\$15	\$15
Non-member	Add \$5 (includes SI stick hire)		
Family entry fees are capped* at 2 senior + 1 junior or sub-junior			

*All participants must be entered/paid for in the same transaction for this to apply

Refund Policy: Competitors may request a refund if they find they are unable to attend. A refund of 90% will apply if notification to treasurer@garingal.com is received before Entry Deadline, and 70% will apply for requests thereafter until the day before competition. Thereafter, no refund will apply except in exceptional circumstances.

Enter here:

<https://eventor.orienteeing.asn.au/Events/Show/22356> Default entry is ALL 3 races. Change this if you don't want to enter all 3.

The closing date is Sunday 25 May 2025 at 11:59pm

Enter on the Day:

Some courses will have a limited availability to Enter on the Day (EOD), with the same fees as outlined above. These courses will include Very Easy, Easy, Moderate and one Hard course.

Start Procedure:

Allocated start times with a punching start. Start times will be published on Eventor in the lead up to the event. See specific events pages (in Final bulletin) for individual start procedures.

Finish: will be a manual punch (dip your SI stick into the finish unit).

Punching system:

SPORTident electronic timing. SIAC Air+ contactless punching will be enabled. SIAC sticks will *not* be available for hire; if you want to use Air+ you will need to bring your own. All control numbers will be displayed on the SI unit. Please disregard any *old* numbers still visible on the flag or stand. The start and finish units must be physically punched.

Food:

The NSW Junior Squad will have food available on each day. Bring some cash and support the Juniors. All proceeds go to helping our sport's future develop and compete. We hope to have a coffee cart in attendance as well.

Accommodation:

Bathurst has a full range of accommodation options. No camping is allowed at the Arena.

Day 1 - Sat 7 June 2025

Kahli's Rocks

Middle Distance



Key Officials:

Organiser: Martine Valais; martineanastasia1@gmail.com
Setters: Karen Langan
Controller: Nick Wilmott / James McQuillan

Map: 'Kahli's Rocks' 1996 (Eric Andrews)

Scale: 1:10,000 (H1, H2); 1:7500 (all other courses); contour interval 5m

Location:

20 minutes SW of Bathurst. In Bathurst turn onto the Mid Western Hwy (A41). After 17.5km turn right. This will be signposted. To prevent blocking the highway, cars can perform a u-turn just before Dicks Creek, approximately 700m beyond the turn. This is a private property access road, initially sealed to the top of the hill and then gravel. Please close any gates you pass through. Follow the road 3km to Arena

Parking:

Will be on one side of the access road leading to the arena. Depending on when you arrive there could be a walk of up to 500m to the Arena.

Arena:

The same arena will be used for both Day 1 and Day 2

Start:

Start times will be allocated from 12pm. Course closure at 3.30pm.

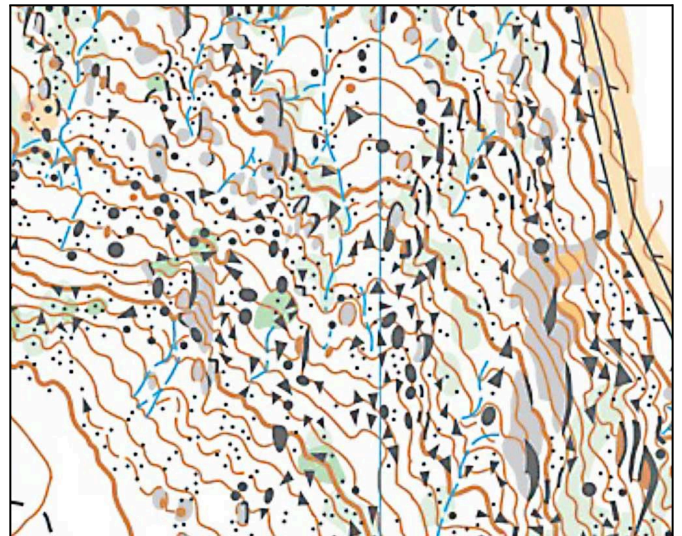
Route to the START is about 750m with 70m of climb.

KBIII Day 1 - Middle			
Course	Classes	Length est (km)	Estimated Winning Times (min)
Hard 1	M21A, M35A	4.7	25-35
Hard 2	W21A, M18A, M20A, M40A, M45A, M50A, M55A	4.2	25-35
Hard 3	W18A, W20A, W35A, M16A, M60A, M65A, M21AS	3.9	25-35
Hard 4	W16A, W40A, W45A, W50A, W55A, W60A, M70A, M35AS	3.8	25-35
Hard 5	W65A, W70A, W21AS, W35AS, W45AS, W55AS, M75A, M45AS, M55AS	2.6	25-35
Hard 6	W75A, W80A, W85A, W65AS, M80A, M85A, M90A, M65AS	1.9	25-35
Moderate	M14A, W14A, M Open B, W Open B, M Junior B, W Junior B	2.3	25-35
Easy	M12A, W12A, Open Easy	1.7	15-20
Very Easy	M10A, W10A, M/W10N*	1.8	15-20

* Shadowing is allowed for this class. Start anytime. Times are not recorded

Course Setters Notes:

The course covers an area littered with boulders of all different sizes. Boulders are marked as round circles on the map unless particularly large with a distinctive shape. There are extensive additional green areas on the map since originally mapped. Vegetation areas should be used as a guide and not for navigation. Areas of light green are generally passable with soft bushes about chest height limiting visibility and slowing passage. The tracks shown on the map are vehicle tracks with regrowth that are less distinct in some places.

Images of typical terrain found at Kahli's Rocks

Day 2 - Sun 8 June 2025

Kahli's Rocks

Long Distance



Key Officials:

Organiser: Huon Wilson, wilson.huon@gmail.com

Setters: Peter Annetts

Controller: Toby Wilson

Map: 'Kahli's Rocks' 1996 (Eric Andrews)

Scale: 1:10,000 (H1, H2, H3), 1:7,500 (All other courses); contour interval 5m

Location:

20 minutes SW of Bathurst. In Bathurst turn onto the Mid Western Hwy (A41). After 17.5km turn right. This will be signposted. To prevent blocking the highway, cars can perform a u-turn just before Dicks Creek, approximately 700m beyond the turn. This is a private property access road, initially sealed to the top of the hill and then gravel. Please close any gates you pass through. Follow the road 3km to Arena.

Parking:

Will be on one side of the access road leading to the arena. Depending on when you arrive there could be a walk of up to 500m to the Arena.

Arena:

The same arena will be used for both Day 1 and Day 2.

Start:

Start times will be allocated from 10am. Course closure at 1pm.

KBIII Day 2 - Long			
Course	Classes	Approx Length (km)	Expected Winning Times (min)
Hard 1	M21A	11.0	75
Hard 2	M20A, W21A, M35A, M40A	8.8	65-75
Hard 3	M18A, W20A, W35A, M45A	7.0	60-70
Hard 4	M16A, W18A, W40A, W45A, M50A, M21AS	5.6	50-65
Hard 5	M55A, M60A, M65A, W50A, M35AS	4.5	50-55
Hard 6	M70A, W16A, W55A, W60A, M45AS, W21AS	3.6	50
Hard 7	M75A, W65A, W70A, M55AS, W35AS, W45AS, W55AS	2.9	50
Hard 8	M90A, M80A, M85A, W75A, W80A, W85A, M65AS, W65AS	2.3	50
Moderate	M14A, W14A, M Open B, W Open B, M Junior B, W Junior B	TBC	35
Easy	M12A, W12A, Open Easy	TBC	20-25
Very Easy	M10A, W10A, M/W10N*	TBC	15-20

* Shadowing is allowed for this class. Start anytime. Times are not recorded

Day 3 - Mon 9 June 2025
Scots All Saints College
Sprint Distance



Key Officials:

Organiser: Anna Dowling; annaliesedowling@bigpond.com

Setter: Anna Dowling

Controller: James Lithgow

Map: 'All Saints' 2009

Scale: 1:3,000; contour interval 2m



Location:

Scots All Saints College - Junior Campus; Eglinton Rd, Llanath, Bathurst

Start:

Start times will be allocated from 10am. Course closure will be no less than 3 hours after last starts.

Course Structure

KBIII Day 3 - Sprint			
Course	Classes	Approx Length (km)	Expected winning times (min)
Hard 1	M21A, M16A, M18A, M20A, M35A	TBC	12-15
Hard 2	M40A, M45A, M50A, M55A, M60A, M65A, W18A, W20A, W21A, W35A, W40A, W45A, M21AS	TBC	12-15
Hard 3	M70A, M75A, W16A, W50A, W55A, W60A, W65A, W70A, M35AS, M45AS, M55AS, W21AS, W35AS, W45AS, W55AS,	TBC	12-15
Hard 4	M80A, M85A, W75A, W80A, W85A, M65AS, W65AS	TBC	12-15
Moderate	M14A, W14A, M Open B, W Open B, M Junior B, W Junior B	TBC	12-15
Easy	M12A, W12A, Open Easy, M14B, W14B	TBC	12-15
Very Easy	M10A, W10A, M/W10N*, Open Very Easy,	TBC	12-15

* Shadowing is allowed for this class. Start anytime. Times are not recorded