

EVOC SUMMER CUP

PROGRAM

SAT 14/01/2017	10H00 - 12H00 MIDDLE RAJAH ROCK
SUN 15/01/2017	11H00 - 12H00 LONG STEPHENSDALE
TUE 17/01/2017	17H30 - 18H30 SPRINT BROOKS HIGH SCHOOL
WED 18/01/2017	17H30 - 18H30 SPRINT WINDSOR PARK
THU 19/01/2017	17H30 - 18H30 SPRINT UTAS
SAT 21/01/2017	21H00 - 22H00 NIGHT TREVALLYN
SUN 22/01/2017	14H00 - 15H30 SPRINT WEYMOUTH

save the date(s)!



EXTRA INFO

Entry fee: 2\$/competition

Ranking: There will be 1 'overall' ranking using the Scottish points system.
The first of every course will get 1000 points
(men and women have separate ranking).

The time of the other competitors is calculated as follows:

$$\frac{\text{winners time}}{\text{runners time}} \times 1000$$

Example:

Course 1 - Long & Difficult			Course 2 - Short & Difficult			Course 3 - Short & Easy		
Jeff	20'00"	1000	Ella	18'00"	1000	John	15'00"	1000
Sarah	25'00"	1000	Ryan	19'00"	1000	Ron	20'00"	750
Ken	26'00"	769	Rita	20'00"	900	Freddy	30'00"	500
Maria	30'00"	833						
Sean	35'00"	571						

To split the winners up :

the runners with 1000 point will get extra points if they have the fastest 'run in'
(= time from last control to the finish).

Example:

Jeff (18" at the finish run in) - 1000 points

Sarah (15") - 1003 points

Ella (16") - 1002 points

Ryan (16") - 1002 points

John (13") - 1004 points

The 4 best results (out of 7 races) will count towards the overall ranking.

Prizes: There will be prizes for the top 5



RAJAH ROCK

Place: Avoca

Time: Start between 10:00 and 12:00

Assembly point: GPS: 147.76611, -41.74525

More info: <https://eventor.orienteering.asn.au/Events/Show/4656>

MIDDLE DISTANCE

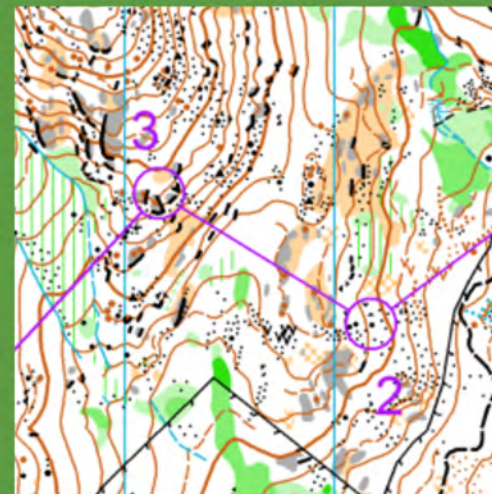
3 courses:

Long & Difficult – 5,6 km

Short & Difficult – 3,5 km

Short & Easy – 2,2 km (*mainly on tracks – but difficult with strawler*)

DAY 1
14.01.2017



STEPHENS DALE

Place: Launceston

Time: Start between 11:00 and 12:00

Assembly point: GPS: 147.07900, -41.44044

More info: <https://eventor.orienteering.asn.au/Events/Show/4677>

LONG DISTANCE

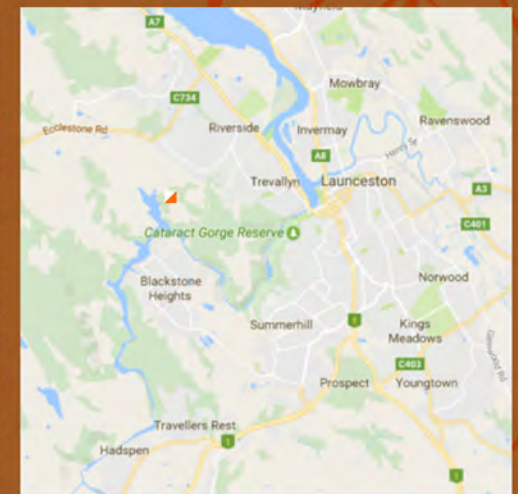
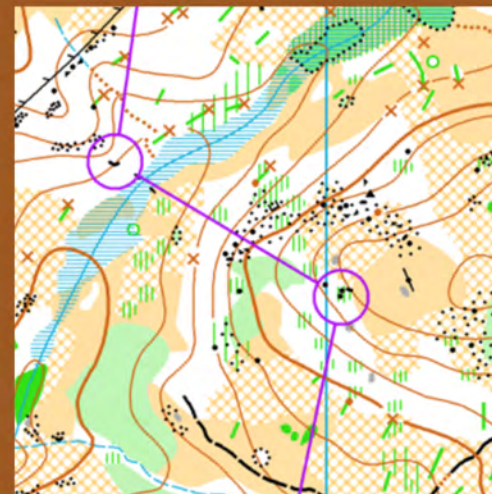
3 courses:

Long & Difficult – 8,2 km

Short & Difficult – 4,1 km

Short & Easy – 2,5 km

DAY 2
15.01.2017



BROOKS HIGH SCHOOL

Place: Launceston

Time: Start between 17:30 and 18:30

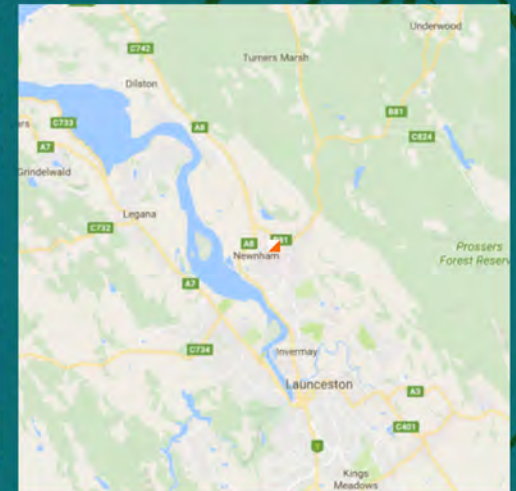
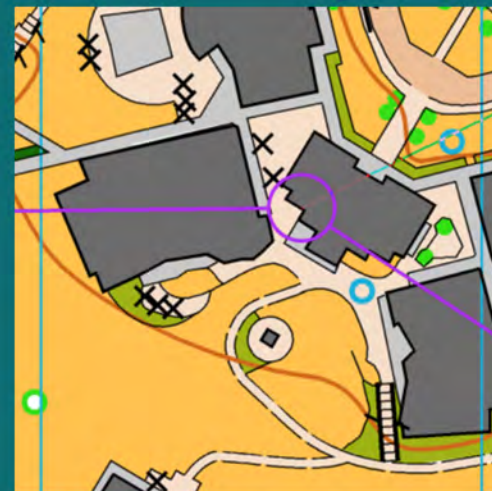
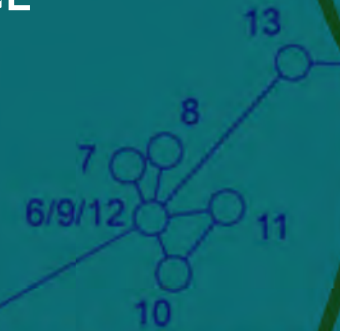
Assembly point: GPS: 147.12272, -41.37835

More info: <https://eventor.orienteering.asn.au/Events/Show/4678>

SPRINT DISTANCE

1 course (with butterflies)

Distance 2,7 km



DAY 3
17.01.2017

WINDSOR PARK

Place: Launceston

Time: Start between 17:30 and 18:30

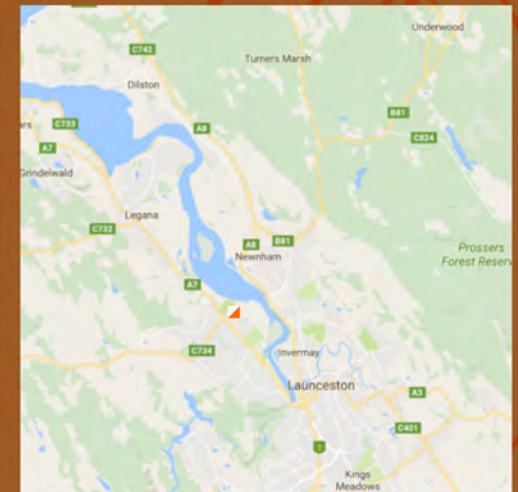
Assembly point: GPS: 147.09457, -41.40408

More info: <https://eventor.orienteering.asn.au/Events/Show/4679>

SPRINT DISTANCE

1 course with a Grid & Labyrinth
Distance 2,5 km

DAY 4
18.01.2017





DAY 5
19.01.2017

UTAS

Place: Launceston

Time: Start between 17:30 and 18:30

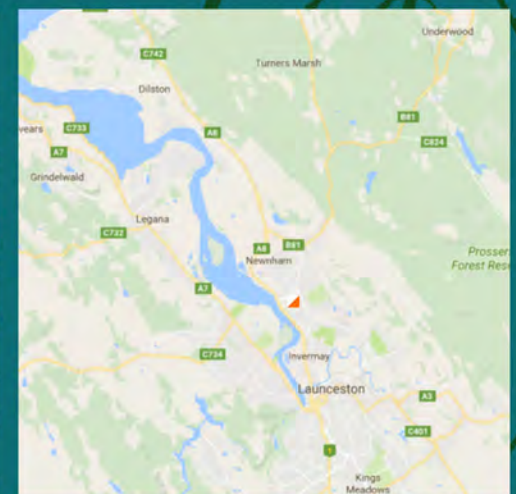
Assembly point: GPS: -41.39797, 147.12022

More info: <https://eventor.orienteering.asn.au/Events/Show/4680>

SPRINT DISTANCE

1 course:

Distance 2,7 km



TREVALLYN

Place: Launceston

Time: Start between 21:00 and 22:00

Assembly point: GPS: 147.0927, -41.44462

More info: <https://eventor.orienteering.asn.au/Events/Show/4681>

NIGHT ORIENTEERING

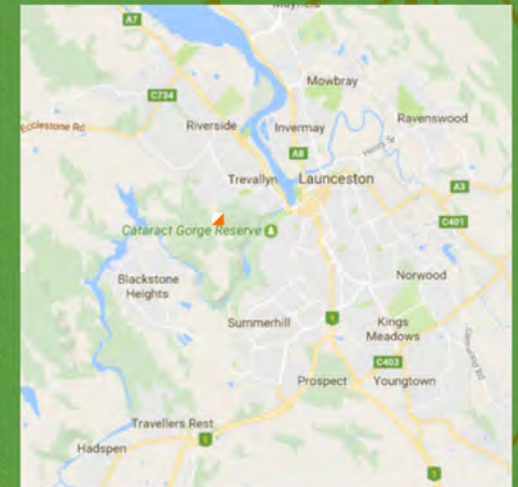
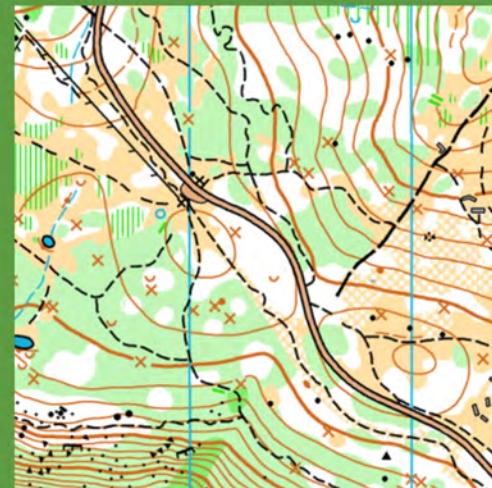
3 courses:

Long & Difficult – 6 km

Easy & Difficult – 3.5 km

Easy & Short – 3 km

DAY 6
21.01.2017



WEYMOUTH

Place: Weymouth

Time: Start between 14:00 and 16:00

Assembly point: 5 Hurst St, Weymouth
GPS: -41.017147, 147.151769

More info: <https://eventor.orienteering.asn.au/Events/Show/4682>

Extra: Prize giving ceremony & BBQ after competition! (BYO BBQ)

SPRINT ORIENTEERING

1 course:

Distance: 2,5 km



DAY 7
22.01.2017