

NSW MTBO Championships – Event Information

Middle Distance: 20th October 2018, 1:00 PM – 4:00 PM
Long Distance: 21st October 2018, 9:30 AM – 1:00 PM



Course Planners

Middle: Ori Gudes (Uringa)
Long: Hamish Mackie (Bigfoot)

Contacts:

Middle: Ron Pallas 0424720165
ronpallas@hotmail.com
Long: Michael Roylance 0414293038
mroylance@gmail.com

Location:

Immediately north of Wedderburn Aerodrome, Lysaght Road, NSW 2560.

NB: Access to the assembly area is only available from the north and not directly from Appin Road

Map

The map is new and if available will be posted online before the event date.

Timing:

Time recording: SI punching and SI Air.

Hire:

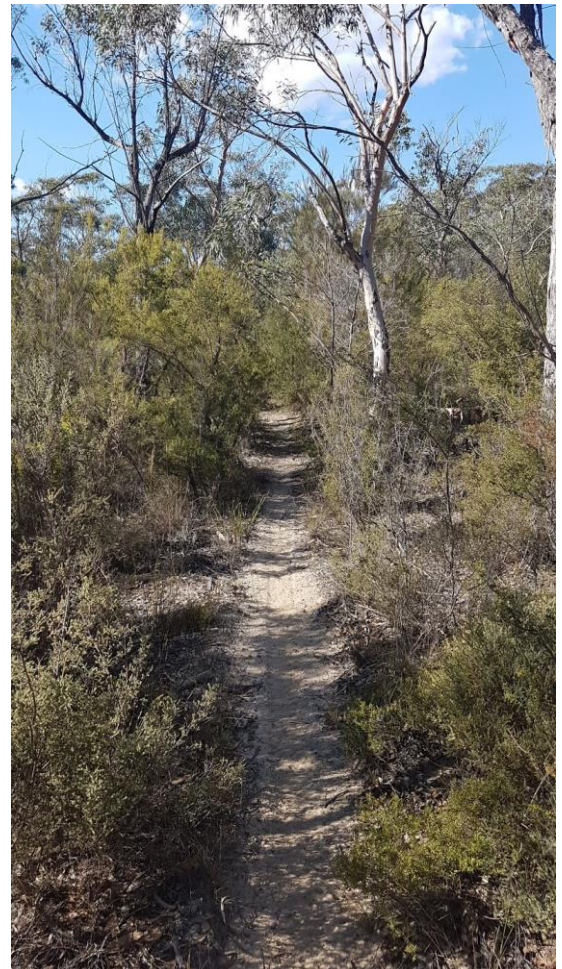
SI Air sticks and a limited number of map boards available for hire. To hire please use the service section of your Eventor entry

Starts:

Queuing start will be used (no start list).

Australian MTBO competition rules shall apply.

No accommodation has been pre-arranged.
Portable onsite toilets provided.



Courses	Classes	Middle	Long
1	M21, M40	15km	25km
2	W21, M20, M50	14km	23km
3	W20, W40, W50, M16, M60, eBike	10km	21km
4	W16, W60, M70, Recreational	8.5km	16km
5	W12, W14, M12, M14, W70, W80, M80	7km	10km

Entry Fees (Entries close Sunday 14th October)

	Middle	Long
Senior (21 +)	\$25	\$25
Junior (13-20)	\$16	\$16
Sub Junior	\$12	\$12

Bushfire Risk Warning:

NSW can be at risk of bushfire in the springtime when this event is scheduled. As the event location is moderately timbered the event management will cancel the event if the local conditions appear hazardous in the days immediately preceding. This will only happen only if absolutely necessary and is for the safety of all competitors and officials.

