

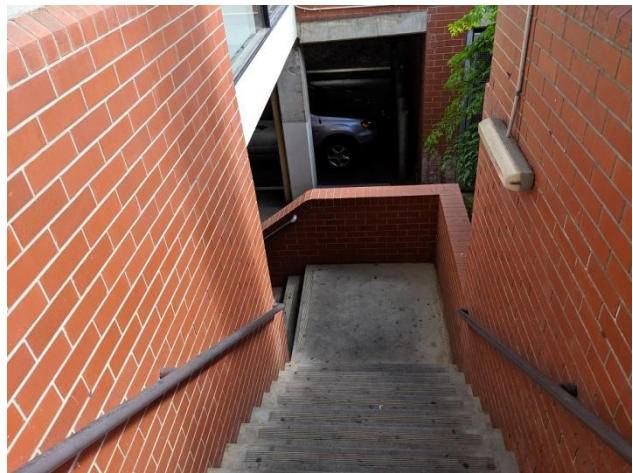
Burnside Photo Quiz - Guess Where?

Guess where these photos are taken. You may not have been there, but you should still be able to work out locations using the O-map and Google. Mark the precise locations up on a map, and send to Aylwin Lim, ayllim@netscape.net by 23/12/19 to win a for box of chocolates!

A



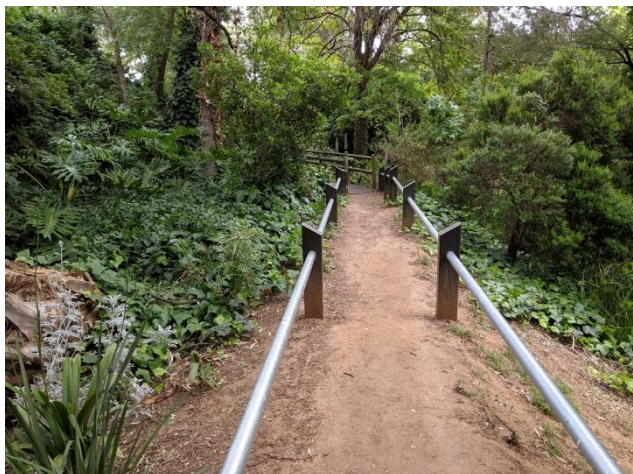
B



C



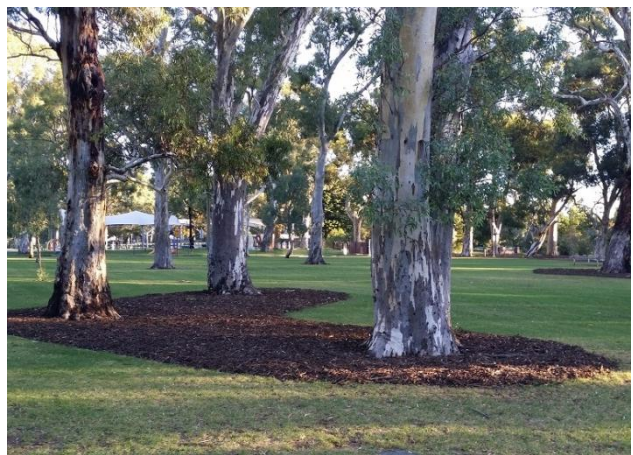
D



E



F



G



H



I



J



K



L





A NAVIGATION STRATEGY SPORT
www.sa.orienteering.asn.au

We always welcome beginners and
casuals at all our regular events!



Base Map, 2019
Mapping: Aylwin Lm, Nov 2019
A Tjuringa Orienteers Map



New members always welcome!
sa.orienteering.asn.au/dubstjuringa

Hazelwood
Park. See
Inset A (PTO)

BURNSIDE

Scale 1:5000 Contours 2m



2019-20
Twilight
Series.

Take care when crossing roads.
All courses close at 8pm. Please be back by then!
Emergency: Call 0438 322 761

Magnetic North
120m



LEGEND

Purple: Do not cross or enter
Please do not step on plants

- Out of Bounds
- Open land
 - with scattered trees
- Rough open land
 - with scattered trees
- Forest - walk
- Forest - fight, Thicket
- Tree, Bush, Log/Stump
- Paved area
- Road, Underpass
- Paved footpath
- Unpaved track
- Steps
- Building
- Canopy
- Pole, Made object/Seat
- Watercourse, Bridge
- Water feature, Rock
- Contours, Knoll
- Passable fence, Crossing
- Passable walls
- Impassable Fence, Wall



Government of South Australia
Office for Recreation and Sport

be active.

HAZELWOOD PARK

Scale 1 : 3 300, Contour interval 2 metres

100m

INSET A

LEGEND

Road - sealed	
Path - sealed	
Path - minor	
Fence - crossable	
Fence - uncrossable	
Stone wall	
Building	
Seat, table	
Made object, Shelter	
Light Post, Monument	
Boulder, Rocky ground	
Paved area	
Contour, Form line	
Earth bank	
Watercourse, Pond	
Weir, bridge	
Prominent: Tree, Bush	
Stump/Log/Dead tree	
Long log (uncrossable)	
Vegetation boundary	
Open land (grass)	
Open with scattered trees	
Rough open land (mulch) with scattered trees	
Garden area, thicket	
Out of Bounds	

Forbidden to cross or enter

Exception: watercourse by bridges.
Please don't damage vegetation.

Photogrammetry: Dept. of Lands
6628-42-p
Base map: Hazelwood Park 1982
Fieldwork and cartography:
Amber Tomas, February 2000
Updated: Andrew Slattery 2013
Ken Thompson 2016-2019
Aylwin Lim 2019
Copyright: Tintoolies OC
Ver 3.9 18th Nov 2019
This map was produced with an
Active Club grant.
Conforms largely to ISSPrOM
2019 with some variations for
school use



Supported By

City of Burnside



A NAVIGATION STRATEGY SPORT
We always welcome beginners and
casuals at all our regular events!
sa.orienteering.asn.au



BURNSIDE PRIMARY SCHOOL

INSET B

LEGEND

Purple: Do not cross or enter.
Do not step on plants.

	Out of Bounds
	Building
	Canopy
	Grass (Open land)
	Sand
	Mulch (Rough Open)
	Paving
	Playground (Soft Paving)
	Slow Run (Vegetation)
	Tree/Prominent Bush
	Stump/Log, Garden Bed
	Bushes, Thicket
	Rock, Rocky ground
	Contours
	Tap, Water fountain
	Impassable Wall/Gate
	Impassable Fence
	Passable Fence/Gate
	Steps
	Pole, Post
	Table/Seat
	Play Equipment
	Other Made Object

aerometrex

Base Map 2019
Mapping: Aylwin Lim Aug. 2019
Copyright: Orienteering SA