



ACT Night Champs
Cooleman Ridge 18.03.2020
Final Bulletin 16.03.2020



Welcome

On behalf of orienteering ACT I would like to warmly welcome all participants to the ACT Unofficial Night Orienteering Champs

Organizers

Event organizer Coach in residence Fryderyk Pryjma Fryderyk.bno@gmail.com 0484277455

Software and SI Tate Needham

Venue

Parking

SW end of Kathner St, Chapman. Parking on side of Kathner St where permitted.

Start and Finish

Follow the orange ribbons towards the start (South using the fire trail) and pink merging to orange from the finish to the assembly. There is a 2 km walk towards start and from finish. Please safe Yourself enough time for covering this distance and leave from assembly early enough.

Programme

19:30 Recommended departure from parking time

20:00 Mass Start

21:40 Closure of the courses and the beginning of picking up controls

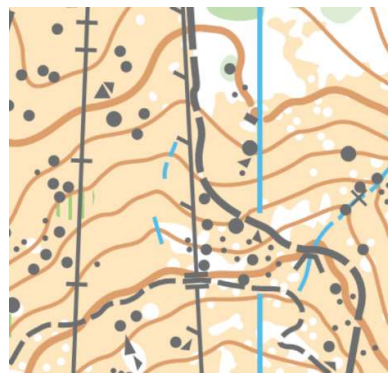
Terrain

That is a technically demanding granite terrain and the competition takes place mainly on two hills and areas around them. There is some play of vegetation and quite many areas with reduced runnability due to stony ground.

Courses

Hard 6.75km 29 controls Considerable Uphill

Moderate 3.96km 15 controls (Almost) Negligible Uphill



Procedures

Pleas clear and check in assembly before heading to the start! There will be no clear and check on the start.

3,5 minutes before the start selected runners will be asked to stand next to the assigned for them maps. 2,5 minutes before the start the rest of the runners aligns next to the free maps lying on the ground (there will be certain distance kept between maps and please stand just next to Your selected map (random) and do not move from that place until start). Moderate course will be placed 5 meters behind the hard course.

30 seconds before the start runners can (after marshal giving signal for it) put the control description attached to their map into their description holders. **Runners are not allowed to look on the map before start!**

Once the whistle is blown the race begins and the runners need to make their way to the map start which is 90m away.

Once completed the run make Your way to the assembly (at the end of earlier mentioned parking spot) and read out. The results will be live. If You won Your category pick up Your prize (Martin Dent is moved by marshals to Open) from marshal (he will be handling it with plastic gloves on).

There is sport ident air technology used.

There is butterfly forking involved. Make sure You head towards Your controls.

The way to the start is signed with reflectors.

The control is a flag + SI unit + reflector on the ground just next to it (watch out not to hit it).

If withdrawn proceed to assembly and read out as well!

Prize

There is a small prize to winner of categories Hard and Moderate: WJ, WM, MO, WO. There is a small prize to top 2 in HMJ and to top 3 in HMM. Considering prized Martin Dent is moved by marshals to HMOpen.

Help

Please help the organizers by picking up controls. There will be transport organized at 9:30 pm from the parking area and the volunteers will be driven to proximity of controls where in quick 15-20' all the controls will be picked up if there are 3 volunteers. Otherwise the poor course setter will spend the rest of the night picking up controls alone... ☹

The smaller the light the bigger the joy!