

KARRAK KARNIVAL RUNNING SHIRTS



Short sleeved version \$46.00

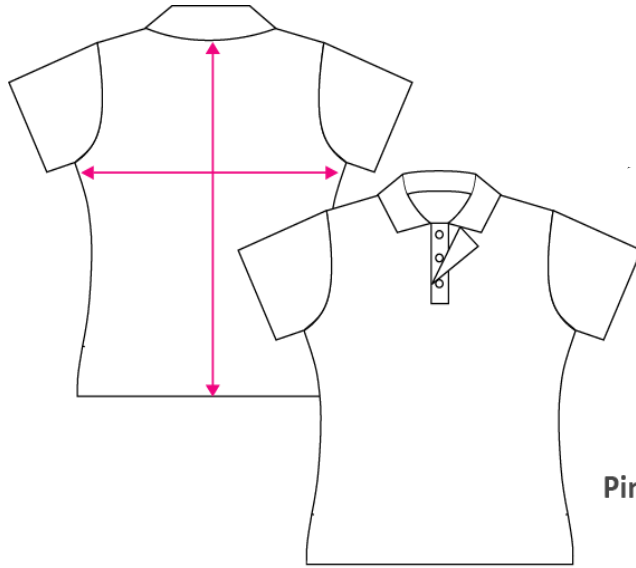


Long sleeved version \$52.00

Orders for shirts can only be made under “**services**” in the Australian Long Distance entry listing in **Eventor**

Ladies Shirt Sizes

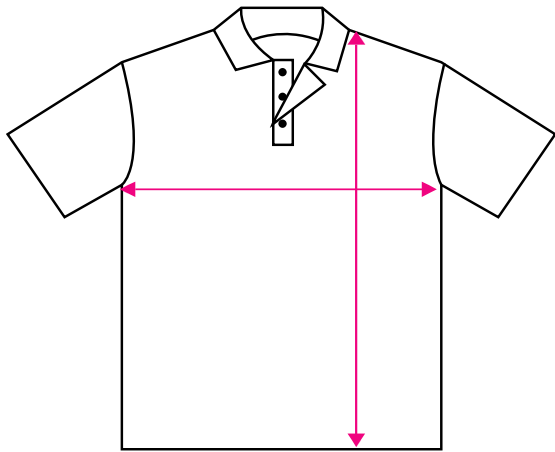
SIZE	BODY WIDTH (mm)	CENTRE BACK LENGTH (mm)
6	470	565
8	490	595
10	510	620
12	530	650
14	550	675
16	570	700
18	595	725
20	615	750



Pink line indicates sizing guide

NB. The sizing diagrams show a buttoned front opening, but the Karnival shirts have zips.

Mens and Childrens Shirt Sizes



SIZE	WIDTH (mm)	HEIGHT (mm) to bottom of neck
10Y	465	560
4XS/12Y	480	570
3XS/14Y	485	630
2XS/16Y	505	690
XS/16	535	720
SMALL	565	730
MED	595	737
LARGE	615	760
XL	645	785
2XL	675	830
3XL	695	870

Pink line indicates sizing guide